



**SUPPLY CHAIN**

**NETWORK**

# SCN Grocery Industry Pilot Results 2004

**Jeff Ashcroft**

***STRATEGIC LOGISTICS***

**Partners**

# The Supply Chain Network Project®

- In 2002 the initial Supply Chain Network Project began in Canada with 33 organizations from all stakeholder aspects.
- Retailers, manufacturers, 3PLs, transport, hardware, software, returnables, government agencies, standards bodies and others convened to jointly develop the SCN Process, Methods and information requirements.
- Outcomes included:
  - Joint industry/vertical development process
  - SCN Technology Vision
  - SCN Process Requirements
  - SCN Message Flows
- Facilitated by joint investment and outside support/facilitation

## What is SCN? ...from the beginning

- An industry by industry focused multi-company consortium approach to jointly develop, fund and implement emerging supply chain process and technology methods.
- Initial exploratory meetings and research for the first Supply Chain Network Project began in February 2001 and original SCN concept document was first developed and presented in March 2001
- Since that time there have been more than 400 meetings and SCN Project presentations
- Initial SCN Working Group meetings began on February 15th 2002 with a Technology Sub-Committee added in May

## What is SCN? ...from the beginning (cont.)

- SCN Implementation Plan and Demonstration Period Pilot Project Plan (Grocery) completed mid-2003
- SCN Pilot Project – Grocery Industry completed in December 2003/January 2004
- Installed, tested and operated end-to-end SCN Project Process including ASN, RFID (pallet level), GPS and integrated SCN Master Schedule, Dashboard and Activity Hub.
- Identified a 50% reduction in total gate to gate receiving time for palletized shipments.
- Client tested and verified their satisfaction that technology was solid and reliable.
- Identified potential ongoing ROI implementation for Full pallet receiving
- Led to industry level project to advance from pallet to case level (CCGD)

## What is SCN? ...from the beginning (cont.)



Note the black plastic leader board closest to the front edge is where the RFID tags are cavity mounted. Also, every pallet used in the Demonstration Period was marked on both ends with a fluorescent yellow label identifying it as an RFID pallet to prevent them from being mixed up with non-RFID CHEP pallets within the Sobeys Distribution Center.

**“ When we began this process I did have some doubts about the RFID technology. After implementing it and working with it through the pilot process I have to say it’s solid... rock solid” Marc Coderre – Sobeys**

## What is SCN? ...from the beginning (cont.)



**Left: Shot of Intermec inbound portal and SCN unloading process at Sobeys's Whitby Retail Support Facility.**

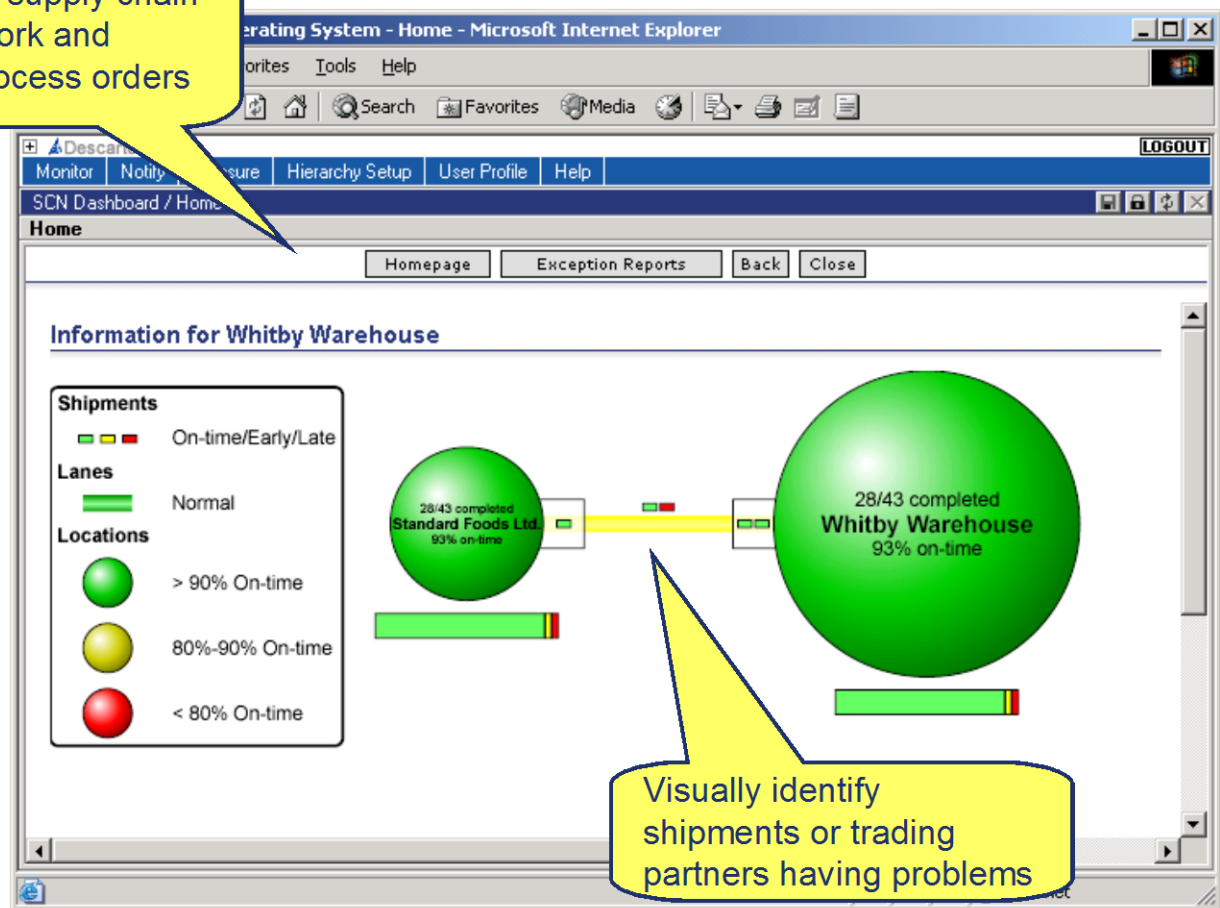
**From Ed Treacy:**

“ We got the results we were looking for out of this pilot. Working RFID at the pallet level, the benefits for the most part end at the receiving dock.

Going forward we see more significant opportunities at the case level”

# What is SCN? ...from the beginning (cont.)

View supply chain network and in-process orders



Visually identify shipments or trading partners having problems